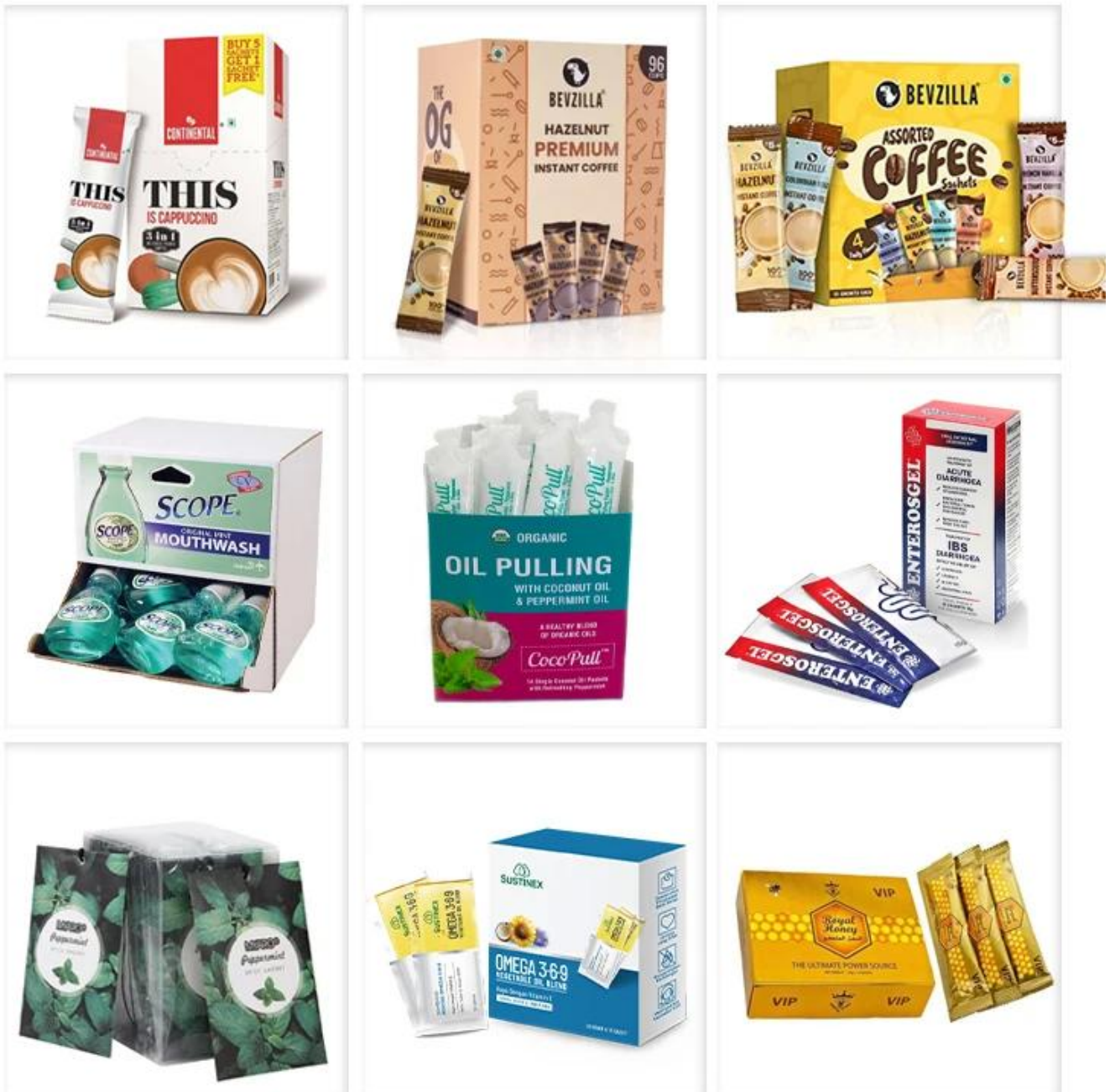


# High Speed Toothpaste Tube Cartoning Machine, Connected To Toothpaste Filling Production Line

## APPLICATION

Customize the shape of the required box according to your needs



The equipment integrates light, gas and electricity, adopts PLC operating system, and is suitable

for the canning and packing connection of water and milk products. It is suitable for cosmetics and drugs. It is convenient and stable for packing. Can save manpower better!

Packing speed	100-150boxes/min
Cartoningsize range	90-120(L)*45-160(W)*15-50(H)mm (customizable)
Box quality	300g/□
Machine size	3000(L)*1400(W)*1600(H)mm
Machine weight	2000Kg
Machine Power	380,50Hz
Voltage	1.5KW

#### Characteristic and Advantage

- 1.This machine is suitable for multi-species, multi-specification carton packaging.
- 2.Machine adopts PLC+HMI control system, international brand electrical component to ensure machine quality.
- 3.The surface is polished, the appearance is beautiful, generous and durable.
- 4.The equipment can be used with upstream and downstream equipment (such as: weighing machines, filling machines, sorting machines, boxing machines and other equipment) to form a complete set of assembly line.



» With different equipment, you can choose a variety of packaging types



Cartoning machine



Vertical cartoning machine



Heat shrink



Cellophane  
Packaging Machine





## VACUUM SUCTION CUP

Can be customized and adjusted to suit various box sizes and dimensions



## CONVEYOR BELT

Neatly transport products into boxes



## FOLDING DEVICE

There are three tongue closing plates on the connecting plate, so that the whole box sealing action can be divided into three steps, that is, bending, inserting the tongue, and sealing.



## PUSHING PART

Stably complete the pushing action of the material and the manual.



## VERTICAL CARTONING MACHINE

Suitable for packaging of various products



## LARGE VERTICAL LIQUID

Product packaging suitable for liquids



## HEAT SHRINK PACKAGING MACHINE

Suitable for packaging of various products





# ABOUT US

---



**FOSHAN JYT AUTOMATION  
EQUIPMENT CO., LTD.**

Is professional in the designing,  
production and sales of packing machines.





VERTICAL WORKSHOP



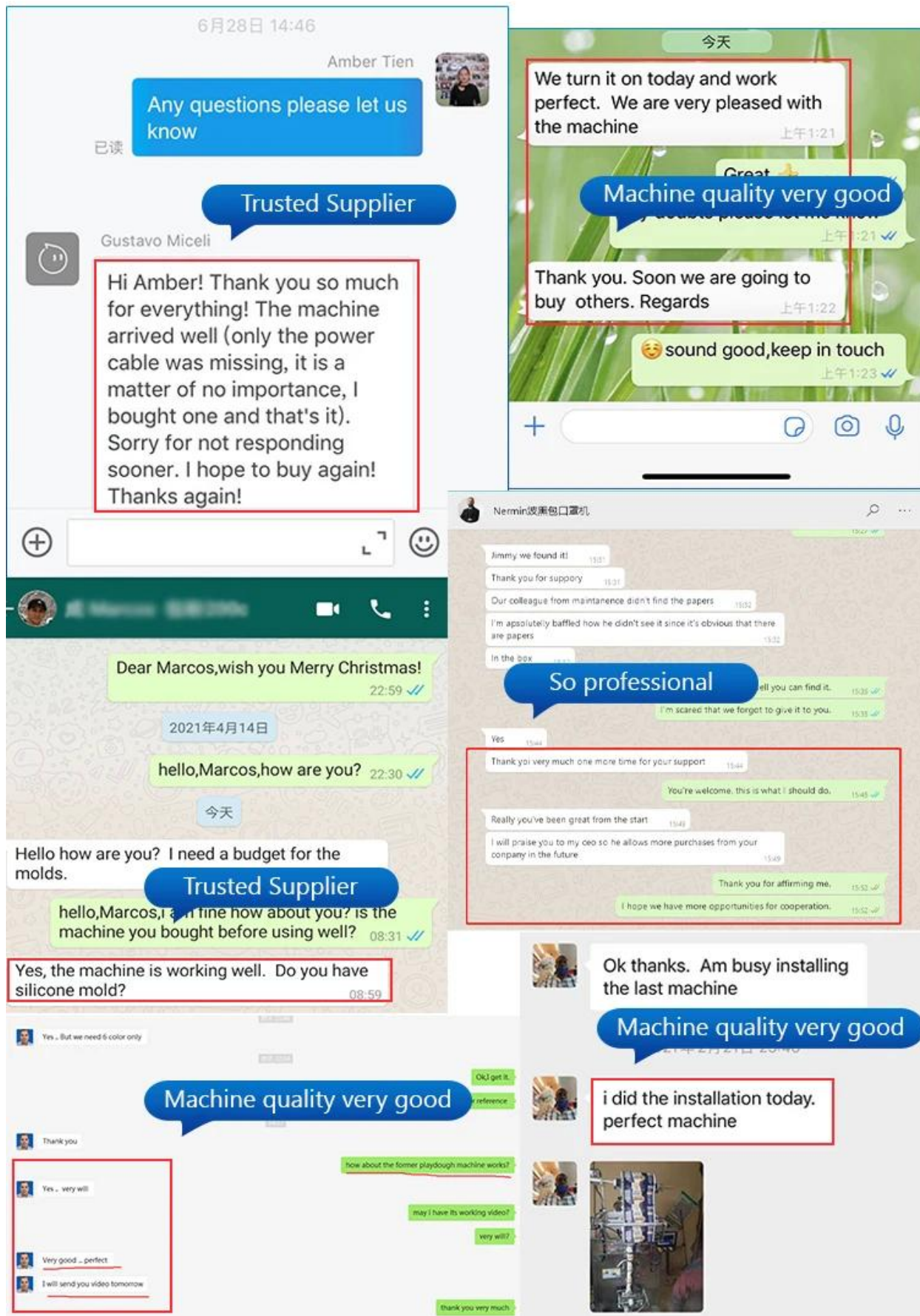
LARGE VERTICAL WORKSHOP



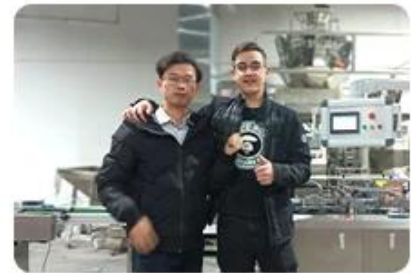
CARTONING MACHINE WORKSHOP



# ABOUT US



# CUSTOMER WITNESS





# OEM COOPERATION PROCEDURE

---



1

**PROVIDED  
SPECIFIED REQUEST**



2

**OFFER SUITABLE  
SOLUTIONS**



3

**MAKE AGREEMENT**



4

**INTO PRODUCTION**



5

**FOLLOW PROGRESS**



6

**FILM TESTING VIDEO TO  
ACCEPTANCE CHECK**



7

**FULL PAYMENT  
COMPLETED**



8

**PACK AND SHIP**



9

**WIN-WIN COOPERATION**

# ABOUT PACKAGING

---



**FAST LEAD TIME**



## FAQ

---

Q1.Are you a manufacturer? A1: Yes, we are an experienced manufacturer with our own brand and

production lines, welcome to visit our factory at your convenient time.

Q2.How about quality of products? A2: Our technicians and QC teams test the products one by one using aging line, professional devices and instruments to ensure the quality for all products.

Q3.How about price? A3: We are a manufacturer and always offer our customers the most competitive prices.

Q4.How to place an order? A4: Contact with online service, or sent email to us directly, we will reply to you with product price, specifications, packing etc. soon. Thank you.

Q5.May I send samples to you testing? A5: Yes! You are welcome to send us your products to test by our machine.

Q6: How long is your delivery time? A6: Generally it is 5-10 days if the goods are in stock. or it is 15-30 days if the goods are not in stock.